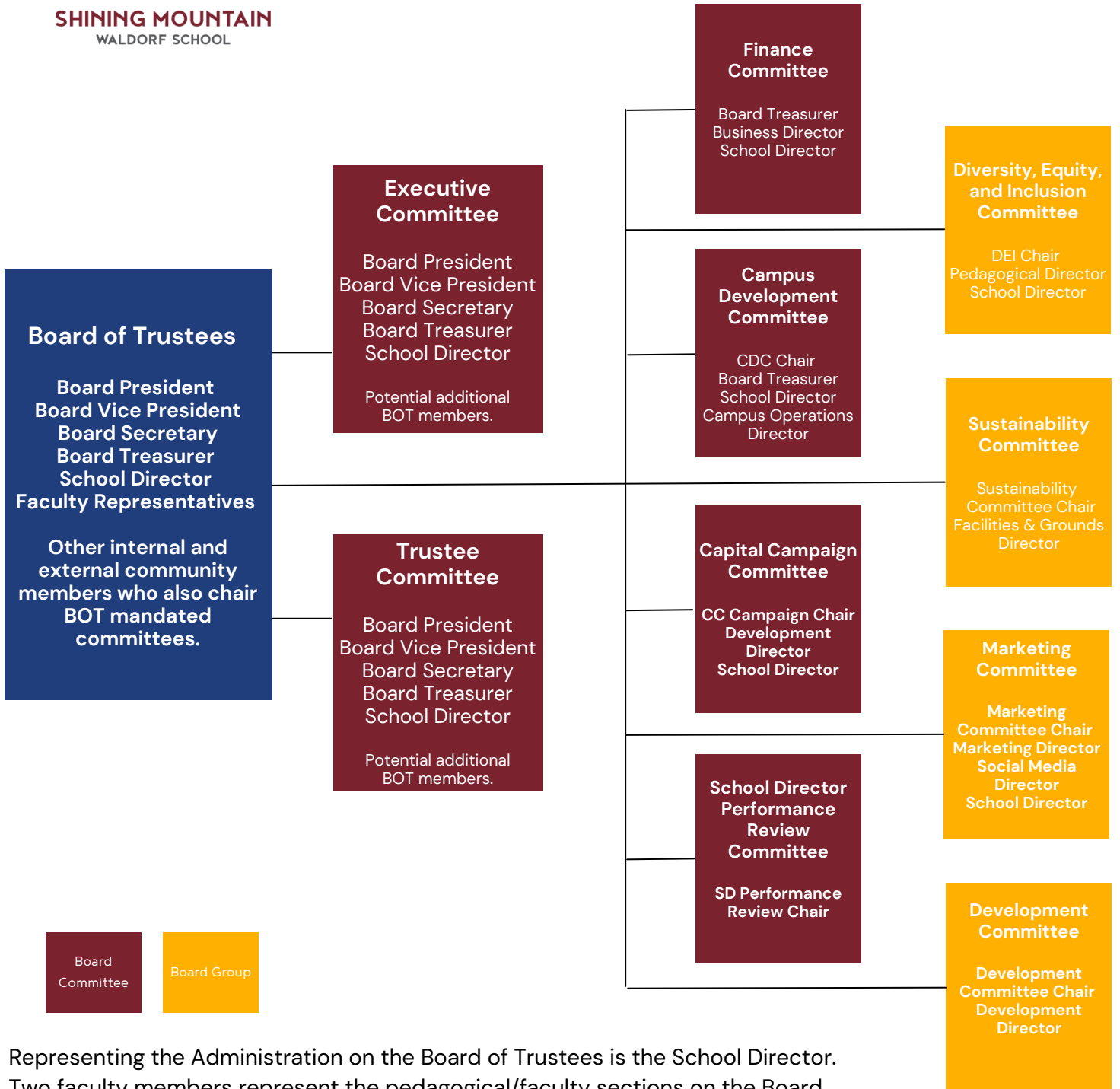


Shining Mountain Waldorf School



Board of Trustees Governance Chart
September 2022



Representing the Administration on the Board of Trustees is the School Director. Two faculty members represent the pedagogical/faculty sections on the Board.

Parents/guardians are welcome to reach out directly to Trustees and Committee Chairs. Board committees are subcommittees of the Board of Trustees and are open to parent/guardian participation, Each committee is chaired by a Trustee. Participation on a board appointed committee is a prerequisite for joining the Board of Trustees. The School Director sits on most Board mandated committees.

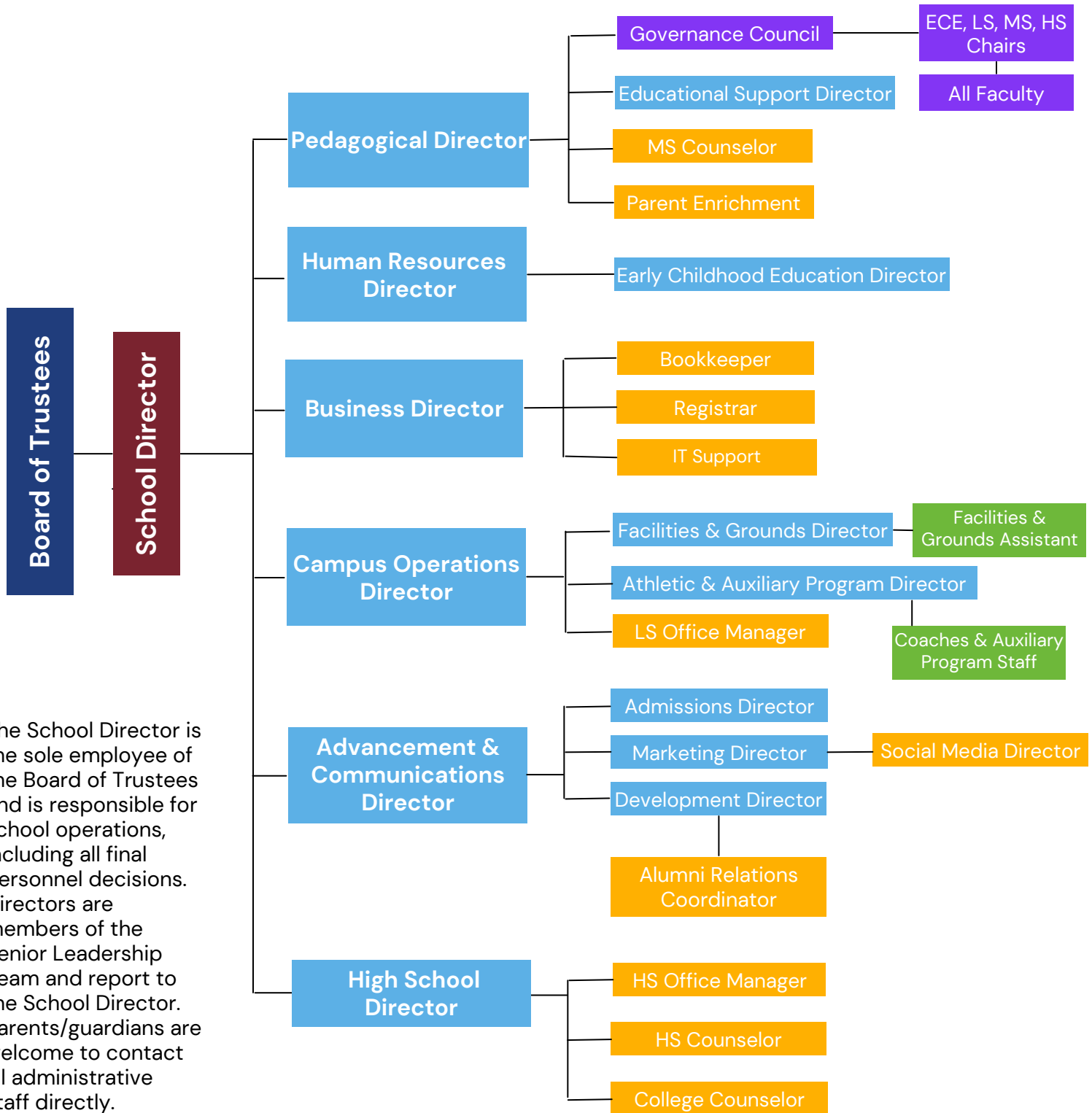
Shining Mountain Waldorf School



SHINING MOUNTAIN
WALDORF SCHOOL

Administrative Governance Chart

September 2022



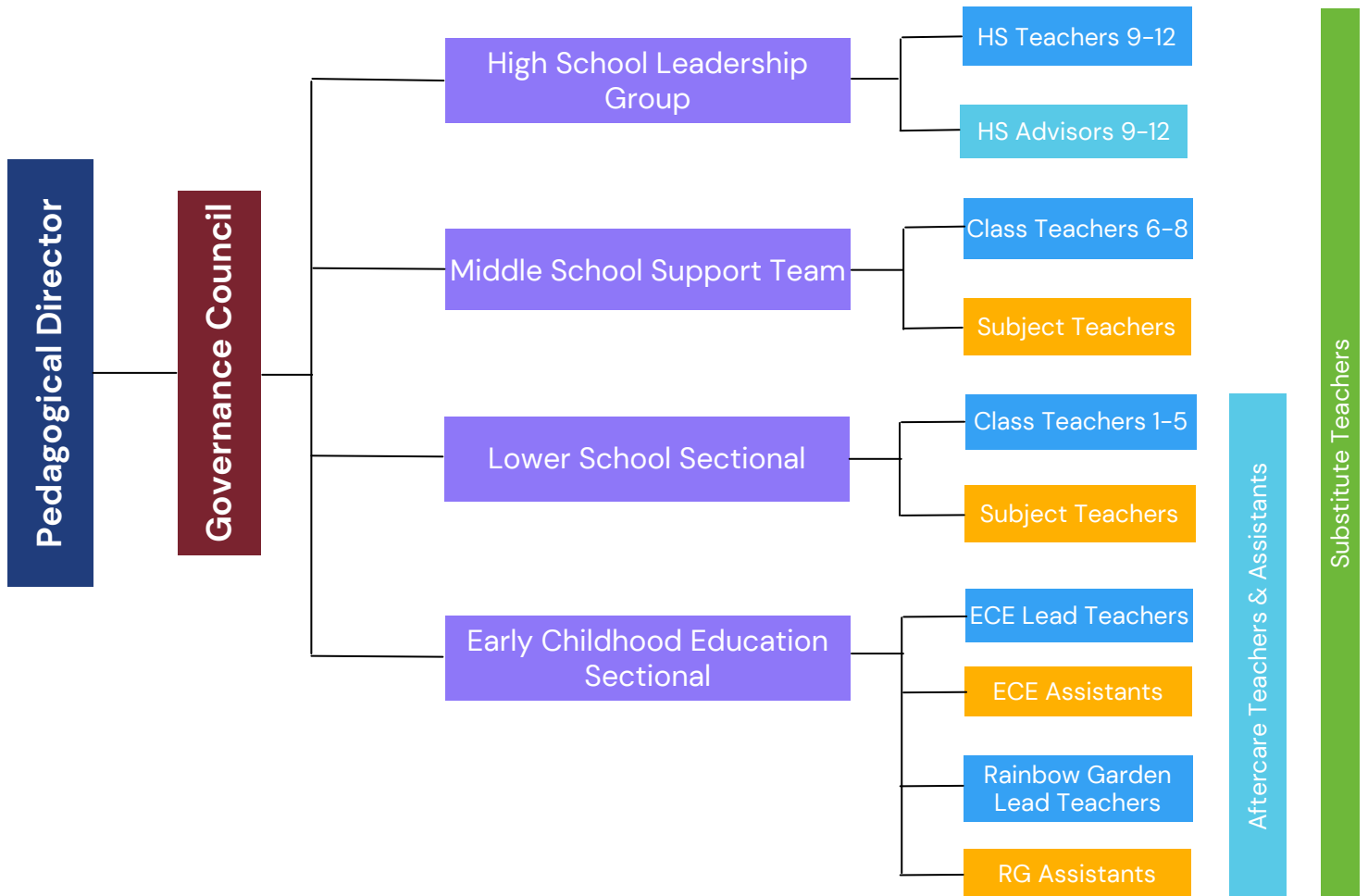
The School Director is the sole employee of the Board of Trustees and is responsible for school operations, including all final personnel decisions. Directors are members of the Senior Leadership Team and report to the School Director. Parents/guardians are welcome to contact all administrative staff directly.

Shining Mountain Waldorf School



Pedagogical Governance Chart

September 2022



The Governance Council includes the Pedagogical Director and School Director, along with faculty representatives from each section of the school – Early Childhood, Lower School, Middle School, and High School. The Governance Council selects the members of the Faculty Committees. All faculty members participate on at least two committees.

Kindergarten parents/guardians are encouraged to be in contact with their Lead Teacher for information or assistance with their student's class. Lower and Middle School parents/guardians are encouraged to be in contact with their Class Teacher. High School parents/guardians are encouraged to reach out to their student's Advisor or the High School Director. Class meetings throughout the year are important for all parents/guardians to attend.